

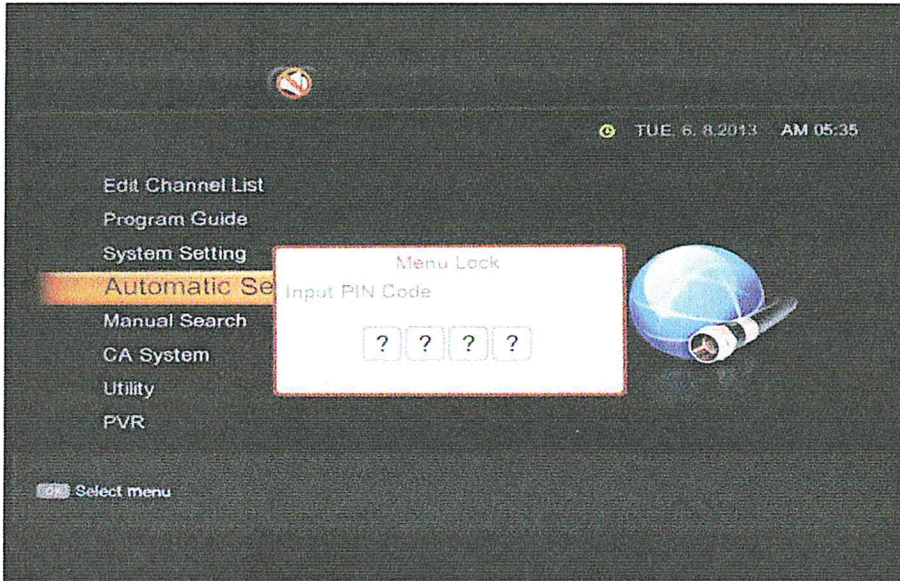
TROUBLESHOOTING TIP FOR:

1) “NO SIGNAL” MESSAGE

2) MISSING CHANNELS FROM YOUR LINE-UP

PRESS THE MENU BUTTON ON THE MCTV REMOTE.

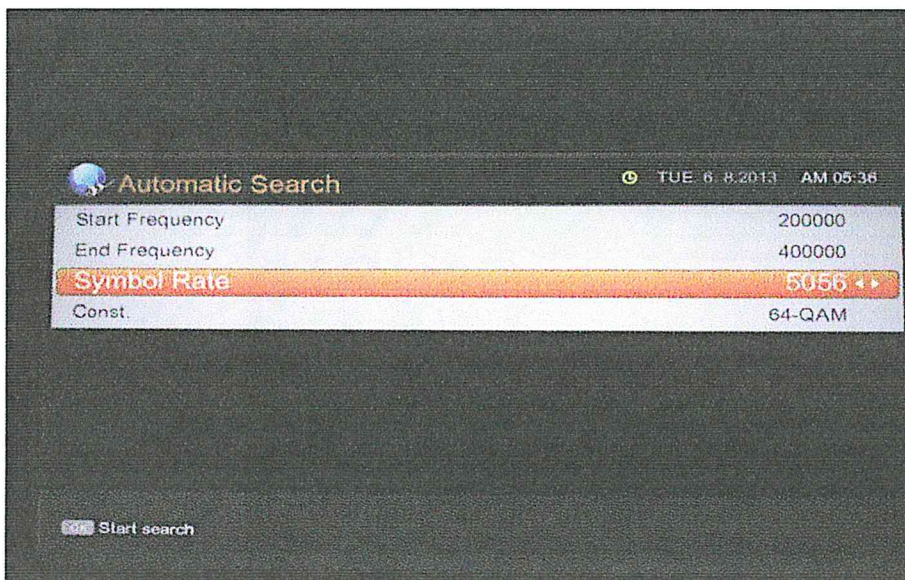
USING THE ARROW KEY, SCROLL DOWN TO AUTOMATIC SEARCH AND PRESS OK.



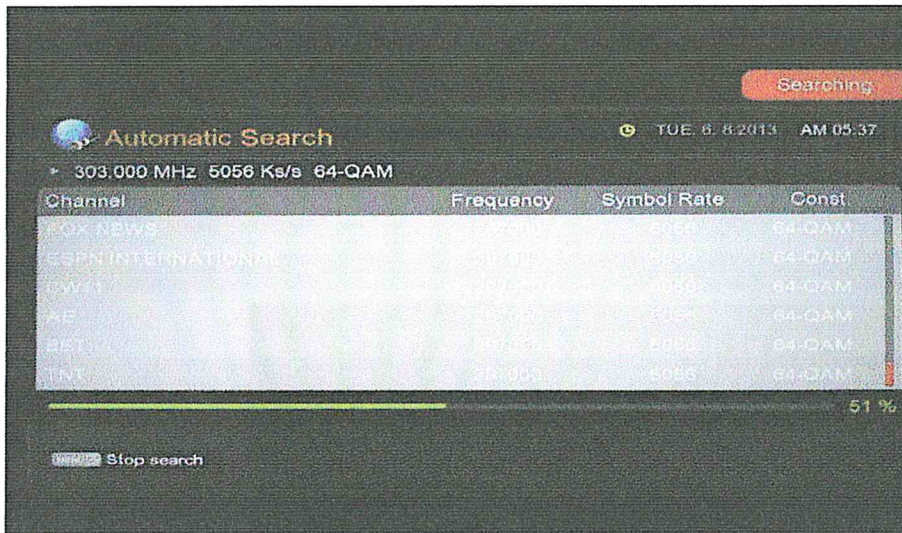
ENTER THE PIN CODE 0000 USING THE NUMERICAL KEYS ON THE MCTV REMOTE.

ENSURE THE ‘START FREQUENCY’ IS 200000, THE ‘END FREQUENCY’ IS 400000 AND THE ‘SYMBOL RATE’ IS 5056 USING THE NUMERICAL KEYS ON THE MCTV REMOTE.

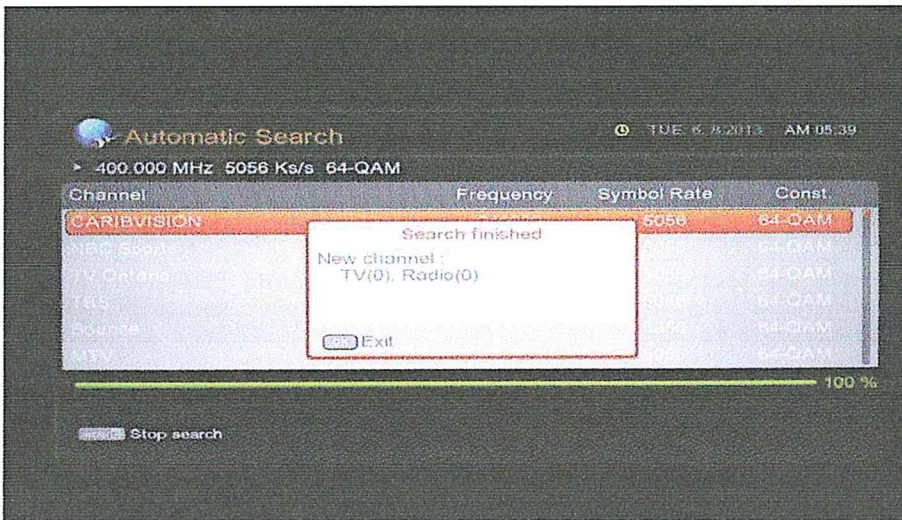
PRESS OK TO START THE SEARCH.



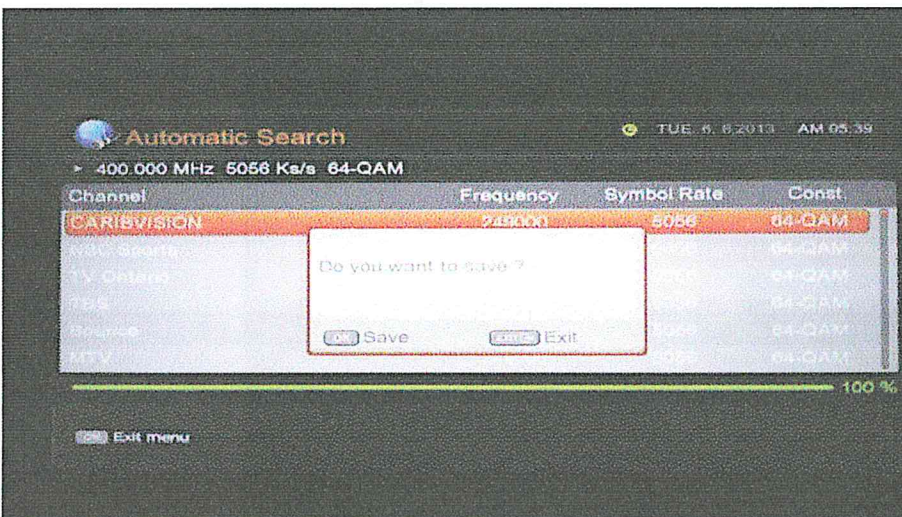
AUTOMATIC SEARCH WILL BEGIN.



WHEN THE GREEN BAR AT BOTTOM REACHES 100 % PRESS OK. THE RESULTS OF THE SEARCH WILL APPEAR.



PRESS OK.



PRESS OK TO SAVE THE RESULTS.

THE BOX WILL EXIT THE MENU. SELECT A CHANNEL OF YOUR CHOICE .